

# BTEC Level 3 Extended Certificate in HSC



EQUIVALENT IN SIZE TO ONE A LEVEL

# The course.....

4 units:

- ▶ 3 **mandatory** units - 2 externally set and marked and 1 internally set and externally verified.
  
- ▶ 1 **optional** unit - internally set and externally verified.

# The Units

▶ **Unit 1 Human Lifespan Development** - *External assessment – 1.5 hour exam*

Learners cover physical, intellectual, emotional and social development across the human lifespan, and the factors affecting development and the effects of ageing.

▶ **Unit 2 Working in Health and Social Care** - *External assessment – 1.5 hour exam*

Learners explore what it is like to work in the health and social care sector, including the roles and responsibilities of workers and organisations.

▶ **Unit 5 Meeting Individual Care and Support Needs** – *Internal assessment – assignment/coursework*

Learners focus on the principles and practicalities that underpin meeting individuals' care and support needs, which are the foundation of all the care disciplines.

▶ **Unit 14 Physiological Disorders and their Care** – *Internal assessment – assignment/coursework*

Learners explore types of physiological disorders, the procedures for diagnosis, and the development of a treatment plan and provision of support for service users.

# The Units @



## YEAR 12

**Unit 1:** Human Lifespan  
Development  
**EXAM**

**Unit 14:** Physiological Disorders  
and their Care

**Summer Work**

## YEAR 13

**TODAY!**

**Unit 2:**  
Working in HSc  
**EXAM**

**Unit 5:** Meeting  
Individual Care  
and Support  
Needs

QUESTIONS?????





TASK

Did you know.....  
in Medway Maritime  
hospital alone,  
there are over  
**350** different jobs!

Which career interests you?

.... and more



# Your **Potential** Future Career



Think about the career you have identified as being interested in. Answer these questions:

1. What do you know about this career?
2. Do you have any experience of this career?
3. What is it about this career that appeals to you?
4. What skills and qualifications do you think you will need for this career?



What is.....?

**TASK: Look at your list of HSC careers. Highlight which roles and positions are health care and which are social care.**



**Health care** focuses on providing medical care to individuals and communities.



**Social care** deals with supporting vulnerable people with the daily activities of life such as feeding, basic hygiene, independence, social interaction etc.



Nurses are the largest group of professionals working in the health services.

## TASK 1: BUBBLE MAP



**TASK 2: Watch the video. Can you add to your bubble map?**

<https://www.youtube.com/watch?v=lori-Vmx2OM>

Carry out medical duties - at their level of seniority and specialism e.g., paediatrics or oncology etc.

Monitor and care for acute and chronic medical needs of patients



## WHAT IS THE ROLE OF A NURSE?

Work to restore health and wellbeing.

Administration e.g., records

Liaise with other health professional e.g., doctor



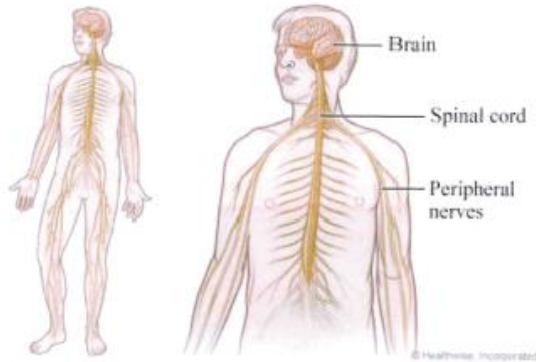
# SUMMER WORK 2024



BTEC National Extended Certificate in Health & Social Care

Unit 14: Physiological Disorders and their Care

LA A1



## THE NERVOUS SYSTEM

- Parkinson's disease
- Alzheimer's disease

- ▶ Booklet given today.
- ▶ Read the information, and complete the questions on the back page.
- ▶ Please bring with you in Sept.