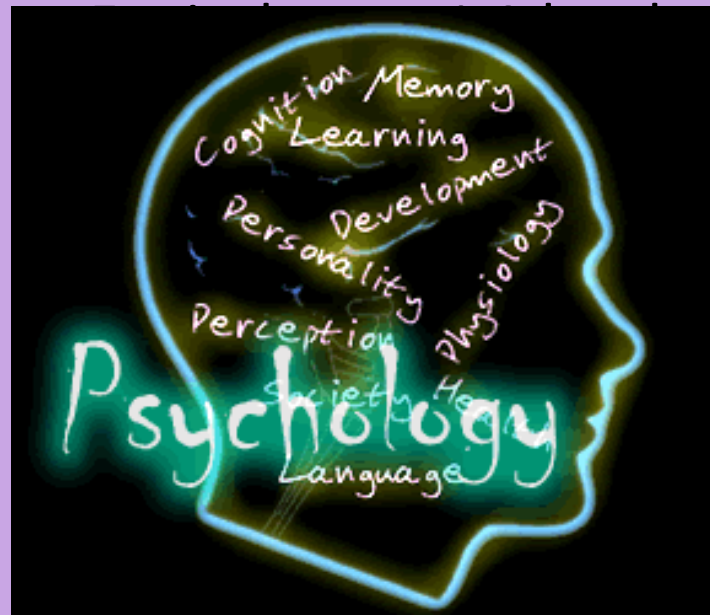


# BTEC NATIONAL EXTENDED CERTIFICATE IN APPLIED PSYCHOLOGY

**Applied General  
Vocational**



**Equivalent to 1 A  
level**

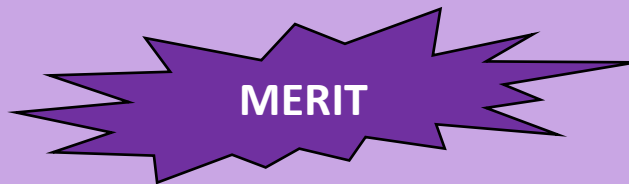
# What will you cover in Year 12?

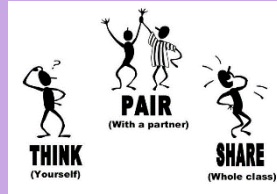
- **Unit 1: Psychological approaches and applications** – Learners will explore four key approaches in psychology – social, cognitive, behaviourist and social, and biological – and apply these approaches to issues relevant to contemporary society.
- 1 ½ hour exam
- **Unit 6 – Introduction to psychopathology** – Learners develop knowledge of psychopathology, types and characteristics of mental disorders and approaches to treatment, and the role of professionals in supporting and promoting mental health.
- Internally assessed coursework (Assignment – extended writing)

# What will you cover in Year 13?

- **Unit 3 – Health Psychology** - Health psychology explores the motivation behind healthy and unhealthy behaviours, and the factors that might persuade individuals to finally change a behaviour, or to follow the advice given by medical professionals. Learners explore psychological approaches, theories and studies related to lifestyle choices, unhealthy behaviours and behavioural change, linking them to their specific contexts.
- 2 hour exam

- **Unit 2 – Conducting Psychological Research** - Human behaviour is unpredictable and diverse, making it particularly difficult to measure. It is, therefore, crucial that the methods used to investigate key questions are appropriate and thorough. Learners develop knowledge, understanding and skills in the scientific process and in psychological research methodology through their own psychological research project.
- Internally assessed coursework (Assignment – extended writing)
- **Coursework (Units 2 and 6) is assessed by an externally set assignment with a range of evidence, externally verified by Pearson.**





# What is Psychology?



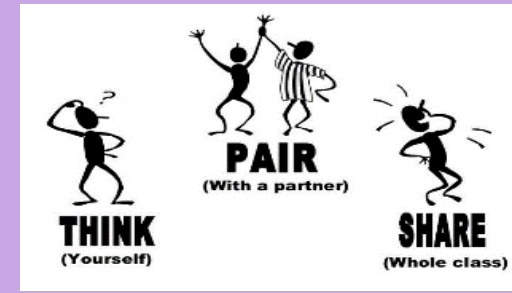
**Psychology is the scientific study of the mind and behaviour, according to the American Psychological Association.**

**Psychology is a multifaceted discipline and includes many sub-fields of study such as areas like human development, sports, health, clinical, social behaviour and cognitive processes.**





# What career can psychology be useful for?



Psychiatrist

Social Worker

Police Officer

Youth Worker

Sport psychologist

Clinical psychologist

Teacher

Criminologist

Psychotherapist

Coach

Forensic psychologist

Manager

Child psychologist

**...and many more!**

# REMEMBER ME?

Your memory is split into different types of storage. Short term memory is where recent information is stored, whilst Long term memory is where information is stored more permanently.

Look at the images above for no more than 30 seconds. Turn around and face away from the images, and recall as many of them as you can! Ask a partner to keep a note of your correct answers and record the number down!







Write down as many items as you remember.



# REMEMBER ME?

Participant Number	Gender	Number of images correctly recalled



# REMEMBER ME?

Participant Number	Gender	Number of images correctly recalled

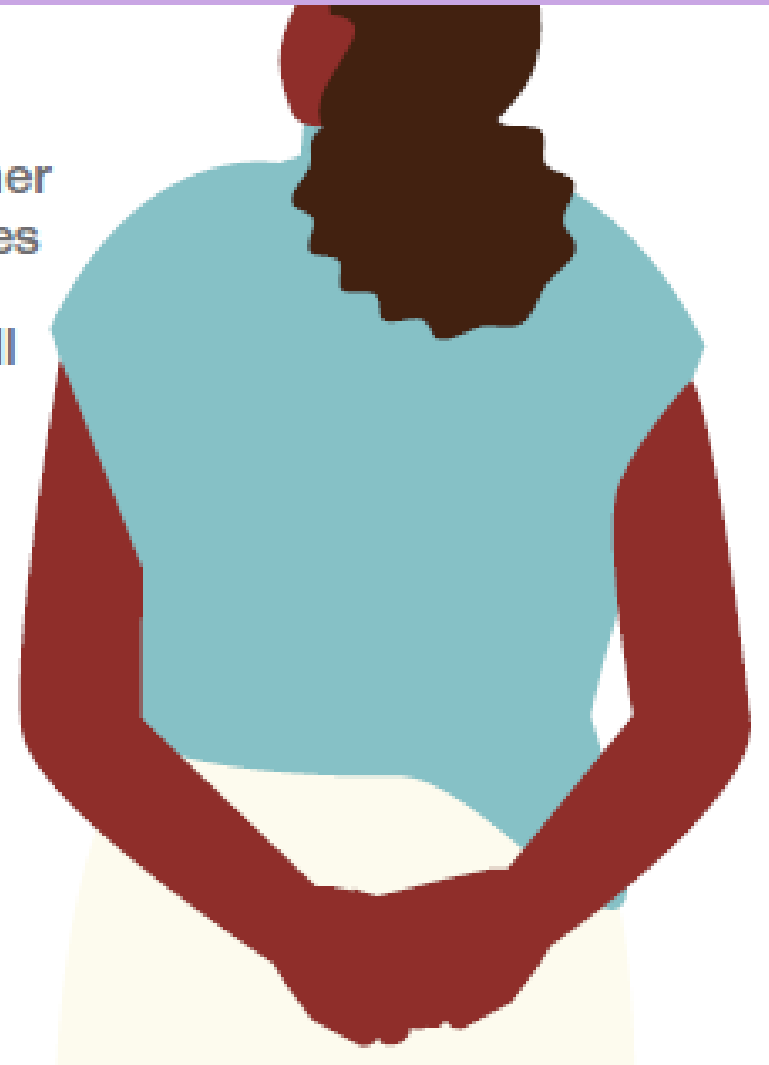


## REMEMBER ME?

Designed to test the short term memory of your guests, and to gather data about what they can recall. Your guests should look at the images for up to 30 seconds, turn around and recall what they could see, in any order. They will need someone to check how many they recall correctly. Guests should record their scores and age on the data collection sheet, and you can prefill the participant numbers.

Suggestions for using the data:

- 1 Investigate the difference in memory ability between different genders
- 2 Calculate averages and dispersion trends
- 3 Convert the data into summary tables or suitable graphs
- 4 Conduct inferential statistical tests using the data
- 5 Assess the validity of the memory test



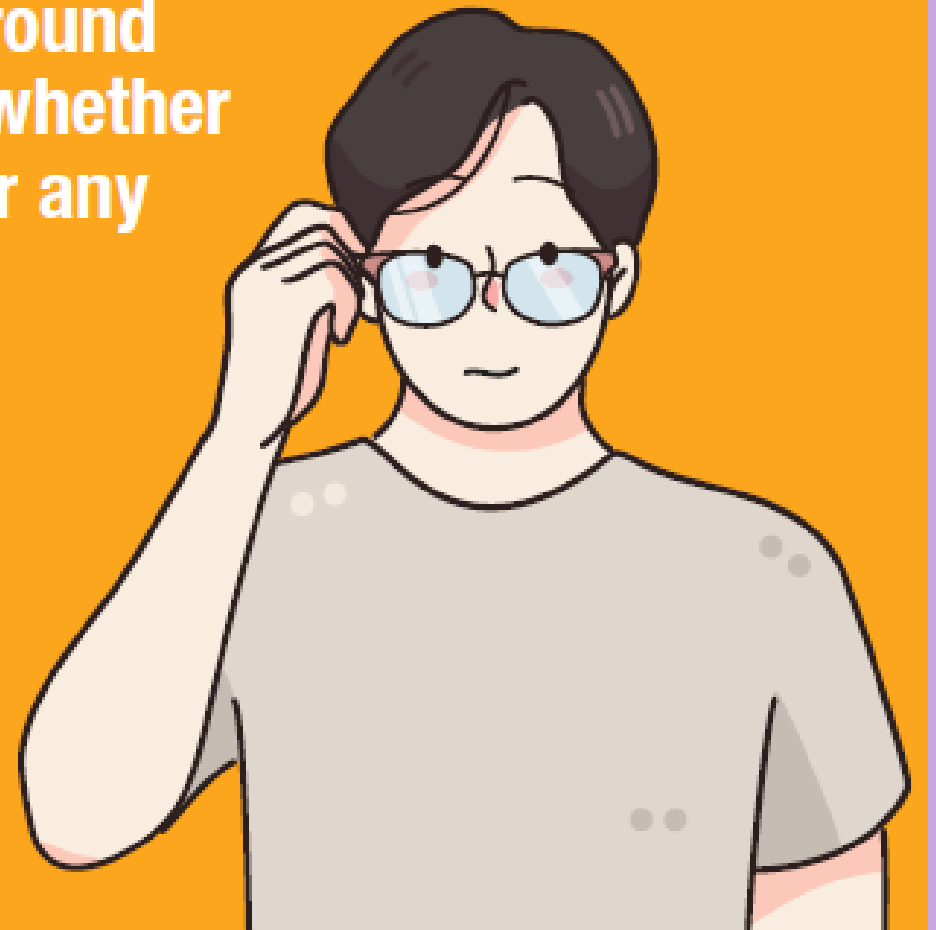


# WATCH THIS SPACE

There is so much information to take in around us, have you ever stopped to think about whether you take it in correctly, or if you remember any of it accurately?

Look at the image of a clock above for 30 seconds.  
Turn away, and take a piece of paper from the table.  
Draw what you can remember about the clock, and put your drawing on the pile.

On your drawing, include your age!







Draw what you can  
remember about the clock.



## WATCH THIS SPACE

This task assesses how accurately your guests can reconstruct a memory. They should look at this image for up to 30 seconds and then use the worksheet provided to recreate their memory! Collect them all in a pile for future analysis. When you look through the drawings, count how many recall number 4 on the watch correctly (IIII) and incorrectly (IV). This test looks to see who relies upon their knowledge of roman numerals to recreate the memory, rather than recall what was actually on the image!

Suggestions for using the data:

- 1 Conduct inferential statistical tests using the data
- 2 Investigate the effect of age on memory recall
- 3 Draw a suitable graph to display the outcomes of the study
- 4 Assess the internal validity of the study

